



UNITED LITHIUM

ADVANCING EUROPE'S GOAL TO BECOME THE FIRST CARBON NEUTRAL CONTINENT

CORPORATE PRESENTATION

SEPTEMBER 2025

CSE: ULTH | OTCQX: ULTHF | FWB: OUL

CAUTIONARY NOTE

THIS MANAGEMENT PRESENTATION (The "Presentation") was prepared as a summary overview only of the current affairs of United Lithium Corp. ("United Lithium" or the "Company") and was not prepared for the purpose of assisting prospective investors in making a decision to invest in United Lithium. Information disclosed in this Presentation is current as of September 2025 except as otherwise provided herein and United Lithium does not undertake or agree to update this presentation after the date hereof. All information contained in this Presentation is derived solely from management of United Lithium and otherwise publicly available third-party information that has not been independently verified by the Company. Further, the Company does not make any representation as to the completeness, truth or accuracy of the information contained in this Presentation. The Company expressly warns readers not to rely on the information contained herein as advice (legal, financial, tax or otherwise) to current or potential investors. Accordingly, any use of this information is at your risk and without liability to the Company. This Presentation does not constitute and should not be construed as either a public or private offer to sell or the solicitation of an offer to purchase securities in the capital stock of United Lithium in any jurisdiction in which such offer, solicitation or sale would be unlawful. Each prospective investor should contact his/her or its own legal adviser, independent financial adviser or tax adviser for legal, financial or tax advice regarding investment related decisions respecting the securities of the Company. No person has been authorized to give any information or make any representation other than those contained in this Presentation and, if given and/or made, such information or representations must not be relied upon as having been so authorized.

FORWARD-LOOKING INFORMATION This Presentation contains certain statements, which may constitute "forward-looking information" within the meaning of Canadian and United States securities legislation. All statements, other than statements of historical facts, are forward looking information and can be identified by the use of statements that include, but are not limited to, words such as "anticipate", "plan", "continues", "estimate", "expect", "may", "will", "projects", "predict", "proposes", "potential", "target", "implement", "scheduled", "forecast", "intend", "would", "could", "might", "should", "believe", "anticipates" and similar terminology or state that certain actions, events or results "may", "could", "would", "might" or "will" be taken, occur or be achieved. Forward-looking information involves statements that relate to future operations, strategies, financial results or other developments. Forward-looking information is necessarily based upon estimates and assumptions, which are inherently subject to significant business, economic and competitive uncertainties and contingencies, many of which are beyond United Lithium's control and many of which, regarding future business decisions, are subject to change. These uncertainties and contingencies can affect actual results and could cause actual results to differ materially from those expressed in any forward-looking statements made by or on United Lithium's behalf. Although United Lithium has attempted to identify important factors that could cause actual actions, events or results to differ materially from those described in forward-looking information, there may be other factors that cause actions, events or results to differ from those anticipated, estimated or intended. All factors should be considered carefully, and readers should not place undue reliance on United Lithium's forward-looking information. Examples of such forward-looking information within this Presentation include statements relating to the future price of minerals, future capital expenditures, timing and successful completion of planned and unplanned exploration activities, success of exploration activities, mining or processing issues, government regulation of mining operations and environmental risks.

FORWARD-LOOKING STATEMENTS are not guarantees of future performance and involve risks, uncertainties and assumptions, which are difficult to predict. Assumptions underlying United Lithium's expectations regarding forward-looking statements or information contained in this Presentation include, among others, United Lithium's ability to comply with applicable governmental regulations and standards, its success in implementing its strategies, achieving its business objectives, the ability to raise sufficient funds from equity financings in the future to support its operations, and general business and economic conditions. The foregoing list of assumptions is not exhaustive. Prospective investors reading this Presentation are cautioned that forward-looking statements are only predictions, and that United Lithium's actual future results or performance are subject to certain risks and uncertainties including: risks related to United Lithium's mineral properties being subject to prior unregistered agreements, transfers or claims and other defects in title; risks related to United Lithium's history of losses, which may continue in the future; risks related to increased competition and uncertainty related to additional financing that could adversely affect its ability to attract necessary capital funding or obtain suitable properties for mineral exploration in the future; risks related to its officers and directors becoming associated with other natural resource companies, which may give rise to conflicts of interest; uncertainty and volatility related to stock market prices and conditions; further equity financing(s), which may substantially dilute the interests of United Lithium's shareholders; risks relating to its exploration operations; dependence on general economic, market or business conditions; changes in business strategies; environmental risks and remediation measures; and changes in laws and regulations.

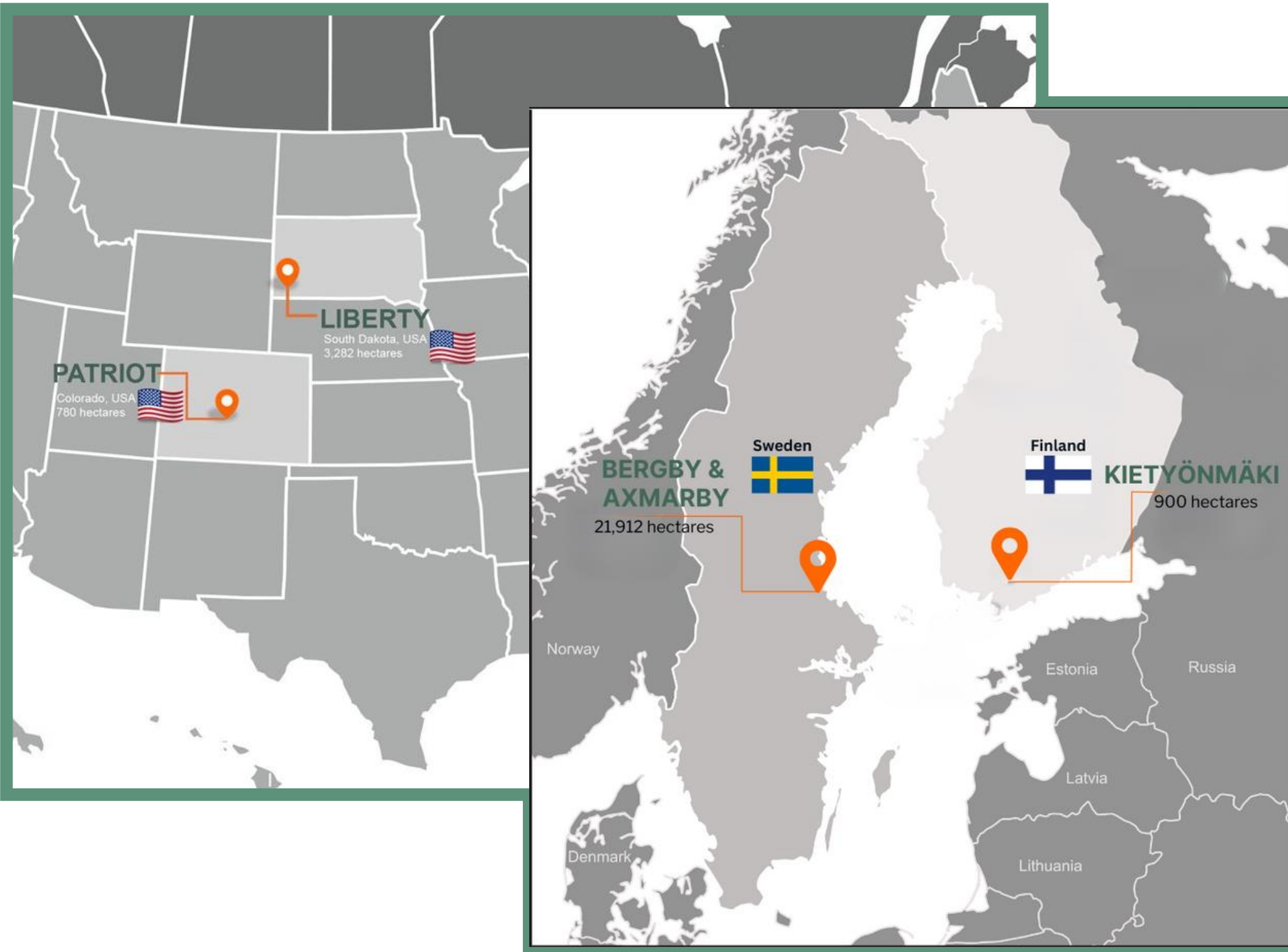
FORWARD-LOOKING ASSUMPTIONS/ESTIMATES in this Presentation reflects United Lithium's current views with respect to future events and are necessarily based upon a number of assumptions and estimates that, while considered reasonable by United Lithium, are inherently subject to significant business, economic, competitive, political and social uncertainties and contingencies. Many factors, both known and unknown, could cause actual results, performance or achievements to be materially different from the results, performance or achievements that are or may be expressed or implied by such forward-looking information contained in this Presentation and documents incorporated by reference, and we have made assumptions based on or related to many of these factors. Such factors include, without limitation: fluctuations in spot and forward markets for silver, gold, base metals and certain other commodities (such as natural gas, fuel oil and electricity); restrictions on mining in the jurisdictions in which United Lithium operates; laws and regulations governing our operation, exploration and development activities; its ability to obtain or renew the licenses and permits necessary for the operation and expansion of its existing operations and for the development, construction and commencement of new operations; risks and hazards associated with the business of mineral exploration, development and mining (including environmental hazards, potential unintended releases of contaminants, industrial accidents, unusual or unexpected geological or structural formations, pressures, cave-ins and flooding); inherent risks associated with tailings facilities and heap leach operations, including failure or leakages; the speculative nature of mineral exploration and development; the inability to determine, with certainty, production and cost estimates; inadequate or unreliable infrastructure (such as roads, bridges, power sources and water supplies); environmental regulations and legislation; the effects of climate change, extreme weather events, water scarcity, and seismic events, and the effectiveness of strategies to deal with these issues; risks relating to United Lithium's exploration operations; fluctuations in currency markets (such as the US dollar, Swedish Krona, and Euro versus the Canadian dollar); the volatility of the metals markets, and its potential to impact the Company's ability to meet its financial obligations; United Lithium's ability to recruit and retain qualified personnel; employee relations; disputes as to the validity of mining or exploration titles or claims or rights, which constitute most of the Company's property holdings; United Lithium's ability to complete and successfully integrate acquisitions; increased competition in the mining industry for properties and equipment; limited supply of materials and supply chain disruptions; relations with and claims by indigenous populations; relations with and claims by local communities and non-governmental organizations; the effectiveness of its internal control over financial reporting; claims and legal proceedings arising in the ordinary course of business activities. Forward-looking information is made based on management's beliefs, estimates and opinions and are given only as of the date of this Presentation. United Lithium undertakes no obligation to update forward-looking information if these beliefs, estimates and opinions or other circumstances should change, except as may be required by applicable law. **Current and potential investors should not place undue reliance on forward-looking statements due to the inherent uncertainty therein. All forward-looking information is expressly qualified in its entirety by this cautionary statement.**

HISTORIC INFORMATION This Presentation contains historical public information on samples from, and geological features on, the Bergby property claims and the Kietyönmäki property claims. This presentation also contains public information on historically producing mines and businesses that may be important to current and future work related to any of the Company's projects and target areas. This information has been sourced from publicly available and other-party sources as well as the Company's good faith estimates. While the Company believed the information was prepared by reputable sources, it did not independently verify the information or underlying sources.

QUALIFIED PERSON The scientific and technical data contained in this presentation was reviewed and approved by Isabelle Lépine, M.Sc., P.Geol. Ms. Lépine is a registered Professional Geoscientist in British Columbia, Canada and is a Qualified Person as defined by NI 43-101 Standards of Disclosure for Minerals Projects.



DIVERSIFIED PORTFOLIO



- 🌐 **Hard-rock lithium projects** in Sweden, Finland, and the USA
- 🏢 In Sweden and Finland, projects are located **near major infrastructure**, including deep-water ports
- 🕒 In the USA, projects are located in **historic lithium-pegmatite mining districts** with extensive outcrops
- 💰 **Funded**, with plans for exploration and project advancement
- 👥 Strong management team and board with **extensive experience** in the metals and mining industry
- 🎯 Targets areas with advanced infrastructure, allowing for **cost-effective exploration and rapid project advancement**

OUR TEAM



Scott Eldridge, President, CEO & Director

15+ years experience in Metals & Mining Industry. Dir. of Nevada Lithium Resources, Founder of Euroscandic.



Chris Cairns, CFO

13 years experience in the mining and finance industry. CFO of Apollo Silver Corp., experience in North and South America.



Michael Kobler, Director

35+ years experience in multiple executive roles. Founded American Lithium Corp and Osum Oil Sands Corp.



Rona Sellers, VP Compliance & Corporate Secretary

13 years experience in corporate and securities law. VP of Commercial & Compliance, Corp Secretary for Apollo Silver Corp.



Robert Schafer, Director

Registered Professional Geologist w/ 35+ years experience. Past president of the Canadian Institute of Mining.



Henrik Lundin, Director

Swedish citizen with extensive experience in the natural resource sector. Previous Chair at Gold Line, COO of Tag Oil Ltd. Currently at EMX Royalties.



Victor Cantore, Strategic Advisor

25+ years of advisory / leadership and capital markets experience. Founder, Nemaska Lithium & President / CEO, Amex Exploration.



Iain Scarr, Director

29 years with Rio Tinto including Director & VP Exploration. Has been responsible for mineral discoveries worldwide.

CAPITALIZATION



Bergby Pegmatite A

CSE: ULTH OTCQX: ULTHF FWB: OUL	
Total Issued & Outstanding	47,741,055
Warrants ⁽¹⁾	6,666,667
Options & DSUs	2,422,719
Fully Diluted	56,830,441
Cash (\$C) ⁽²⁾	389,000
Debt	Nil

(1) 6.7M @ \$0.40/warrant expire in April 2027
 (2) Based on April 30, 2025 Financial Statements

LITHIUM INDUSTRY SUCCESS

MILLENNIAL
LITHIUM

- **Andy Bowering Founded**
- Iain Scarr COO
- Sold to Lithium Americas for \$491M (\$4.91 / share) in 2022
- Properties featured robust PEA's, approved EIAs, DIA's issued and pilot plant in production

AMERICAN
LITHIUM

- **Andy Bowering Founded**
- Properties in Nevada and Peru, all with Robust PEAs and a combined NPV of US\$5.3B
- Published its maiden ESG report in August 2023

UNITED LITHIUM

- Experienced management and board (including **Andy Bowering** and Iain Scarr) Large property portfolio in Sweden, Finland, & USA Properties in areas with extensive infrastructure to allow
- rapid exploration and development

MACRO OPPORTUNITY

EUROPE'S QUEST FOR HOME-GROWN LITHIUM

OPPORTUNITY:

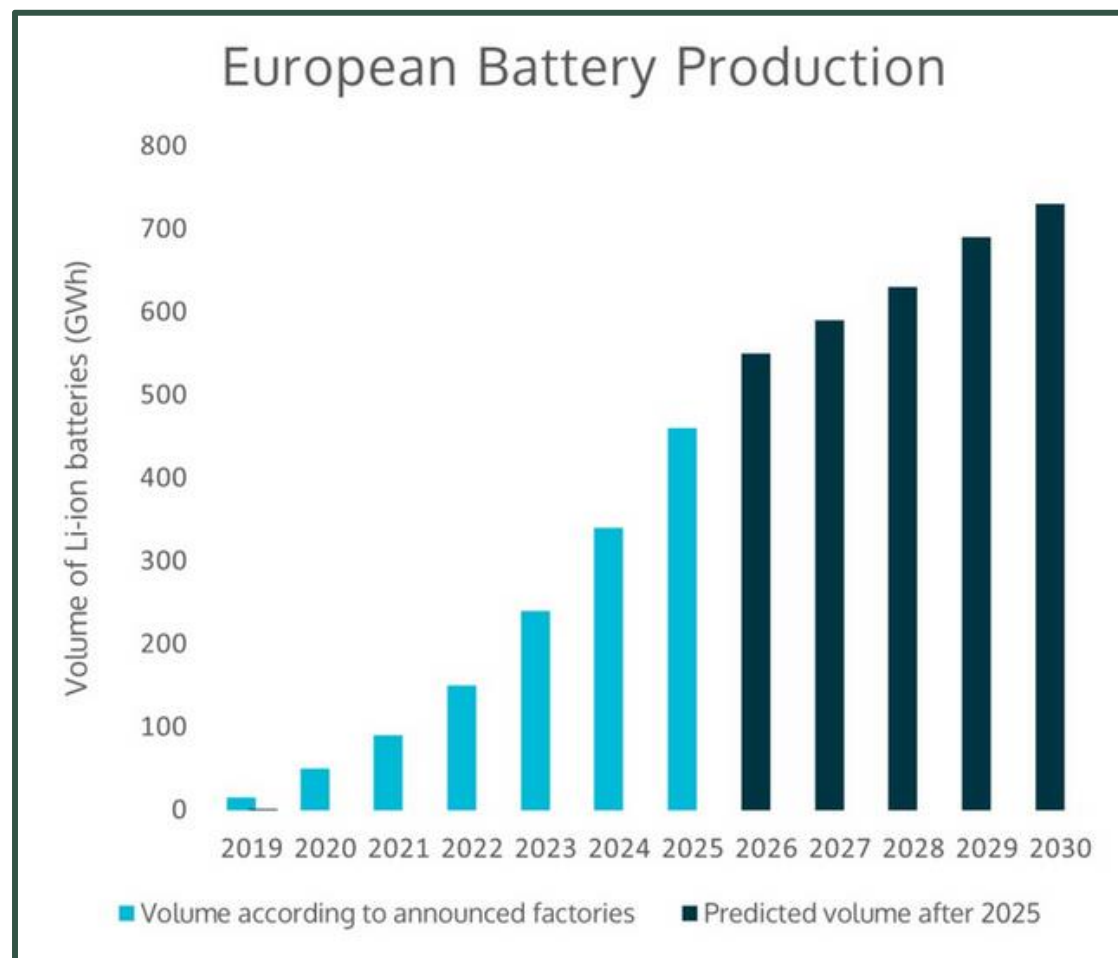
Europe is the 2nd largest EV market combined with government level support

GOAL:

Climate Neutrality by 2050

ACTION:

The **Critical Raw Materials Act** aims to strengthen Europe's critical raw materials capacities along all stages of the value chain



VOLUME OF LI-ION BATTERY PRODUCTION, 2019-2030, EUROPEAN FEDERATION FOR TRANSPORT AND ENVIRONMENT

2030 Benchmarks

EV Extraction

10%

EV Processing

40%

EV Recycling

15%

External No More

*Than 65%
From 1 Country*

BUILDING EUROPEAN CAPACITIES:

Identify Strategic Projects

Fast-track Permitting

Boost Exploration for EU Projects

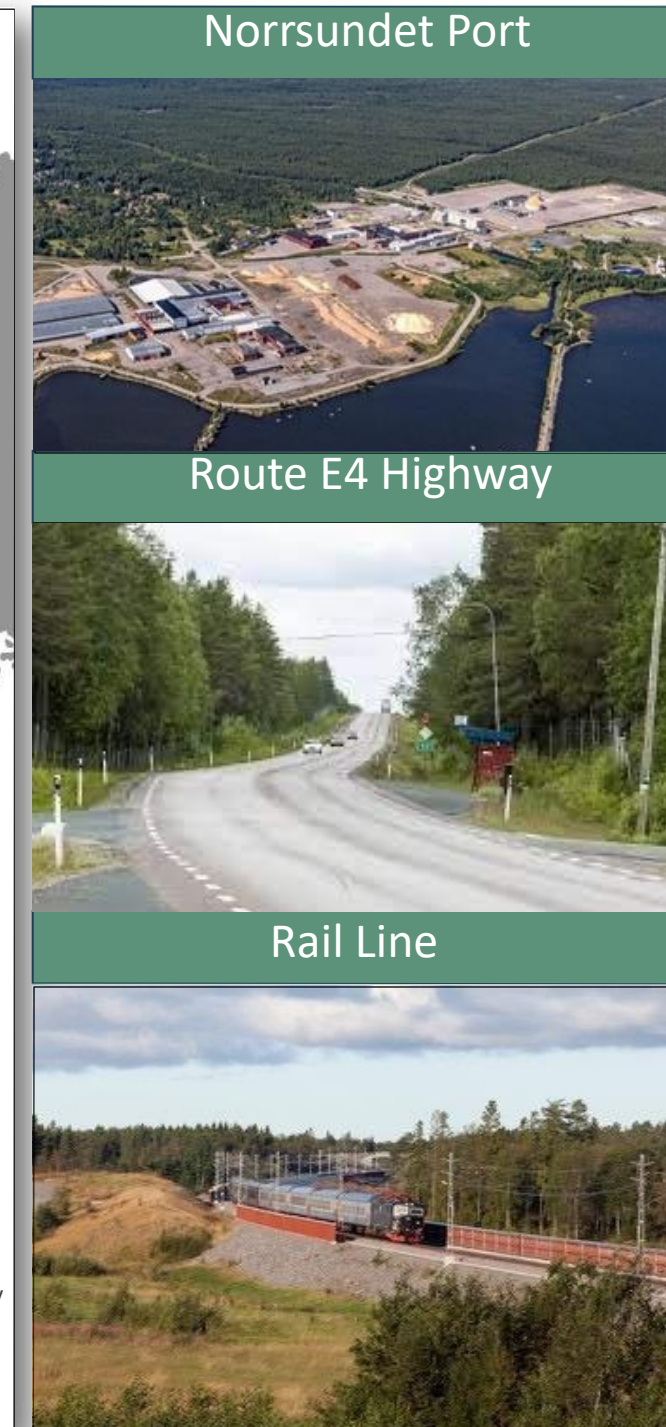
SOURCE: EUROPEAN COMMISSION – FACTSHEET ON EUROPEAN CRITICAL RAW MATERIALS ACT

BERGBY PROJECT



S W E D E N

- ✓ **Flagship district-scale project** covering a highly prospective, large (7,897 ha) land package in mining-friendly Sweden
- ✓ **Five drill-confirmed lithium-mineralized spodumene pegmatites** identified that extend over more than 4 km
- ✓ **Swedish National Interest Designation¹**
- ✓ Excellent transport infrastructure (paved roads, power, cities) and **within 2 km of major deep-water port**
- ✓ Sweden is one of **Europe's leading ore and metal-producing countries** with 12 mines active across the country
- ✓ **Optimally positioned** to benefit from EU/UK markets and contribute to meeting European green energy objectives



Three Key Elements:

01 NEAR INFRASTRUCTURE
Easily accessible and cost-effective exploration & drilling

02 MINING FRIENDLY
Long history of mining & aims to remain the EU's leading mining country

03 CRITICAL RAW MATERIALS ACT
European Council legislation to support domestic objectives

¹ See News Release dated December 16, 2024



BERGBY PROJECT

S W E D E N 

Historical Work and Significant Results

2021 United Lithium Acquires Bergby & Begins Exploration

- ✓ Discovers several lithium-mineralized boulder trains indicating the presence of **new mineralized bodies**
- ✓ Significant surface rock sample results include **3.33% Li₂O**, **3.15% Li₂O** and **2.82% Li₂O**¹

2022 First Drill Program Completed by United

- ✓ Further drilling at Pegmatite A, and **drill-confirmed two new discoveries** (Pegmatites “B” and “C”)
- ✓ Discovery drill hole BBY21069 at Pegmatite B intercepted **47.75 m of 1.34% Li₂O** from 2.25 m depth (estimated true thickness 10 m)²

Bergby Project Location and Tenure



¹ See news releases dated September 30, 2021 and October 19, 2021

² See news release dated January 20, 2022

BERGBY PROJECT

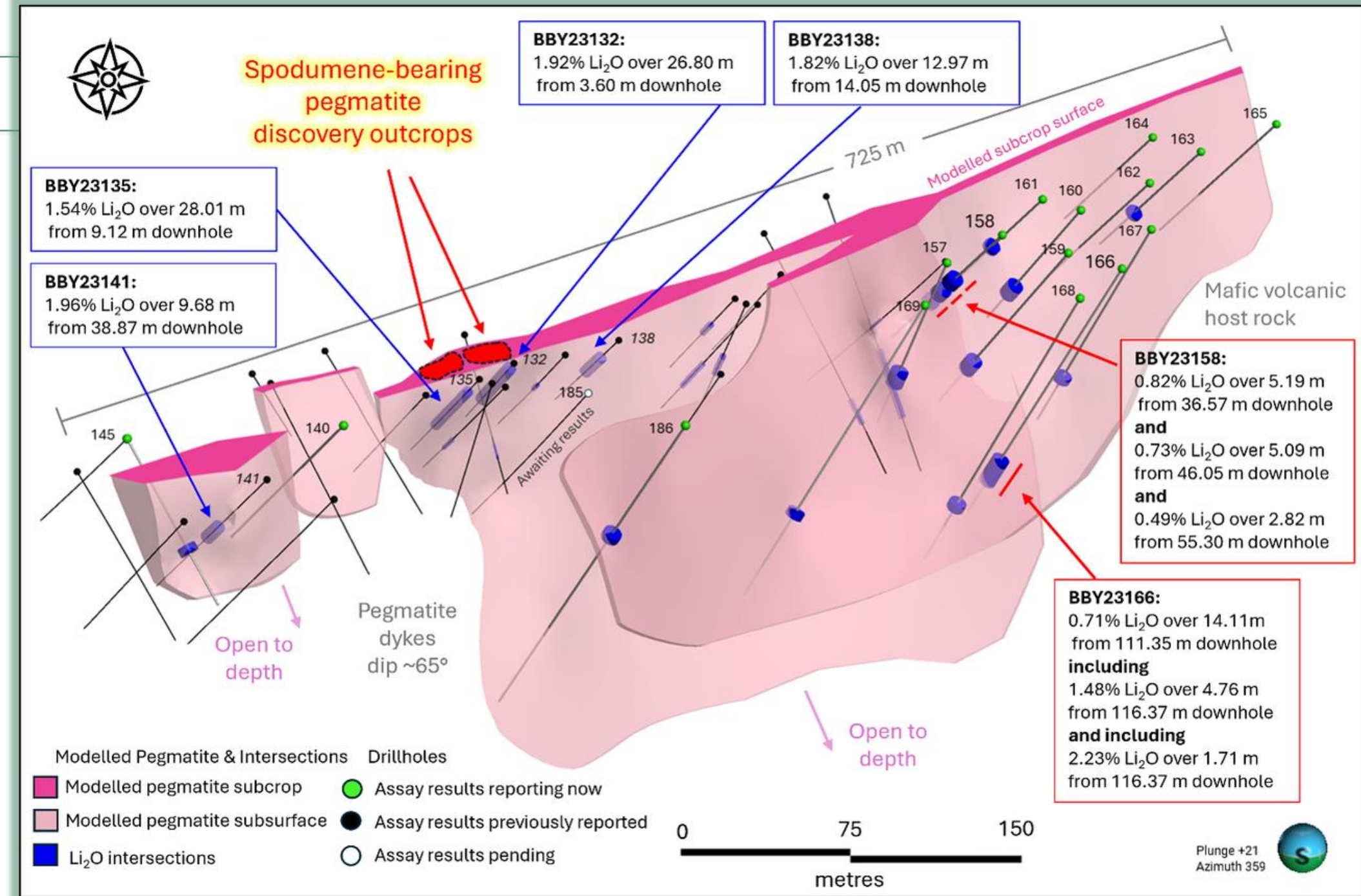
S W E D E N 

Current Work Program

2023 Completed Drilling - Pegmatite D

- ✓ All three new pegmatites (D, E, F) discovered by prospecting and identifying spodumene-bearing pegmatite outcrops
- ✓ Pegmatite D - drill tested along a **strike length of 725 m** and to a **depth of 120 m** below surface and has an **estimated maximum width of 22 m**.
- ✓ Highlights from 2023 drilling at Pegmatite D include:
 - 1.92% Li₂O over 26.80 m from 3.60 m depth (hole BBY23132)¹;
 - 1.82% Li₂O over 12.97 m from 14.05 m depth (hole BBY23138)¹;
 - 1.96% Li₂O over 9.68 m from 38.87 m depth (hole BBY23141)¹.
 - 1.82% Li₂O over 23.75 m from 75.96 m depth (hole BBY23155)²;
 - 1.01% Li₂O over 8.01 m from 22.89 m depth (hole BBY23150)²;
 - 1.01% Li₂O over 14.45 m from 35.23 m depth (hole BBY23152)²;
 - 1.45% Li₂O over 2.02 m from 37.49 m depth. (BBY23158)³;
 - 1.48% Li₂O over 4.76 m from 116.37 m depth (hole BBY23166)³.

Pegmatite D and Drill Hole Results, Nov. 21, 2023 & June 12, 2024



¹ See news release dated November 21, 2023.
² See news release dated January 11, 2024.
³ See news release dated June 12, 2024.

BERGBY PROJECT

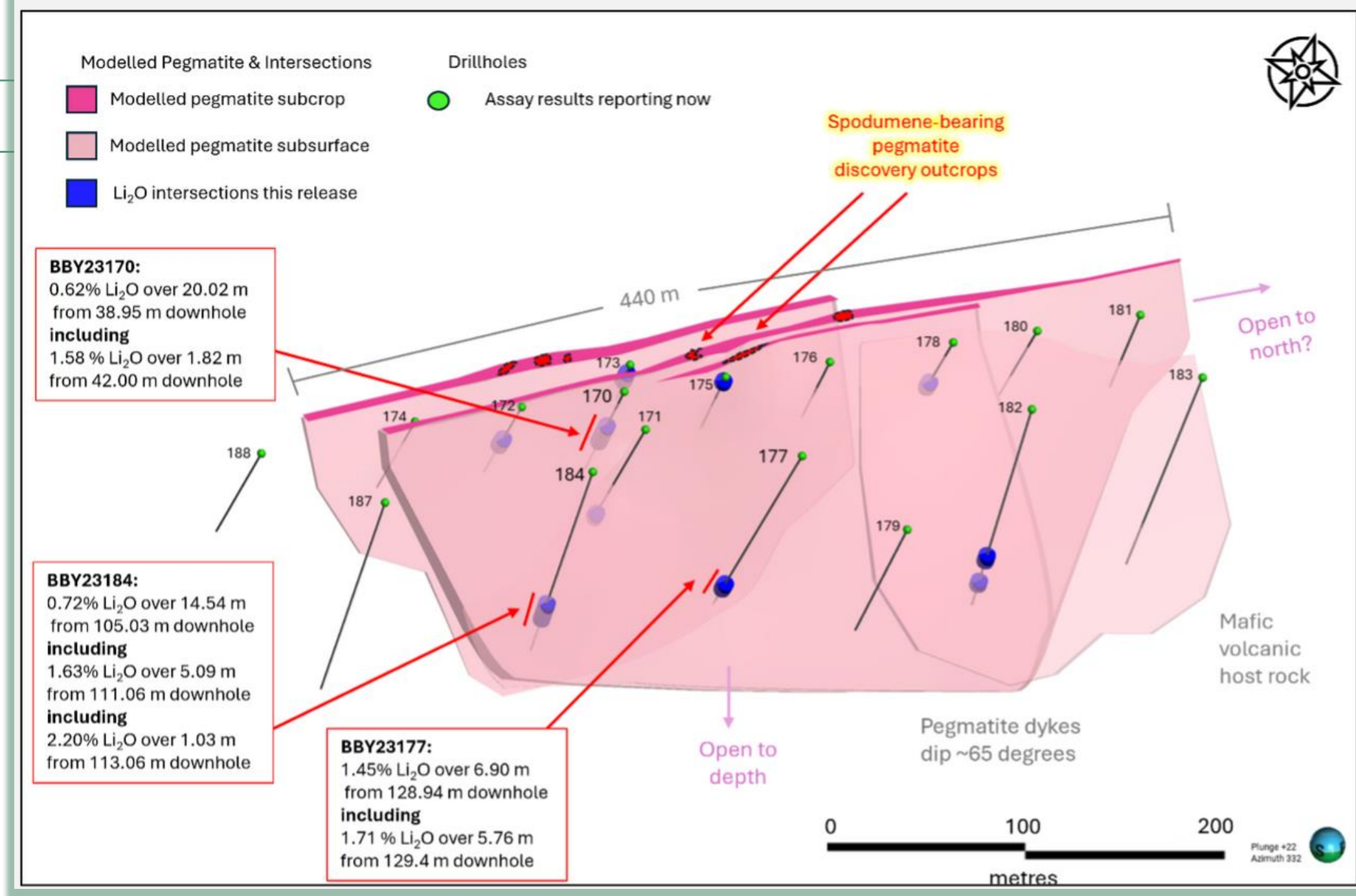
S W E D E N 

Current Work Program

2023 Completed Drilling - Pegmatite E

- ✓ Pegmatite E - drill tested along a **strike length of 440 m**, to a **depth of 85 m** below surface and has an **estimated maximum width of 16 m**
- ✓ Highlights from 2023 drilling at Pegmatite E include¹
 - 1.58% Li₂O over 1.82 m from 42.00 m depth (BBY23170);
 - 1.71% Li₂O over 5.76 m from 129.40 m depth (hole BBY23177);
 - 1.63% Li₂O over 5.09 m from 111.06 m depth (hole BBY23184);
 - 2.20% Li₂O over 1.03 m from 113.06 m depth (hole BBY23184)
- ✓ 5,600 m has been completed across 60 holes in Pegmatites D, E and F
- ✓ 58 out of 60 holes have been released

Pegmatite E and Drill Hole Results, June 12, 2024



¹ See news release dated June 12, 2024

BERGBY PROJECT

S W E D E N 

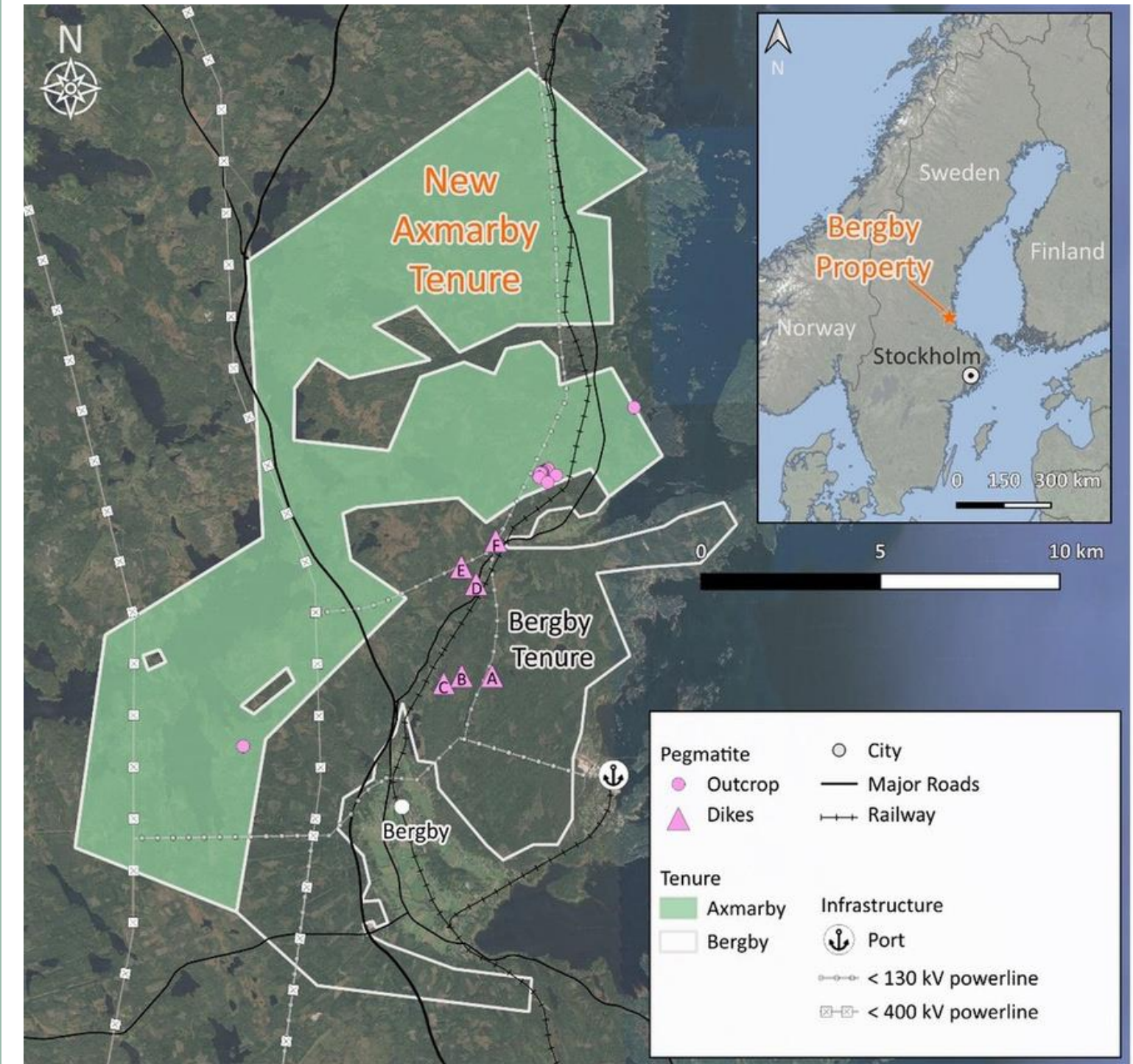
Current Work Program

2024

Axmarby Tenure

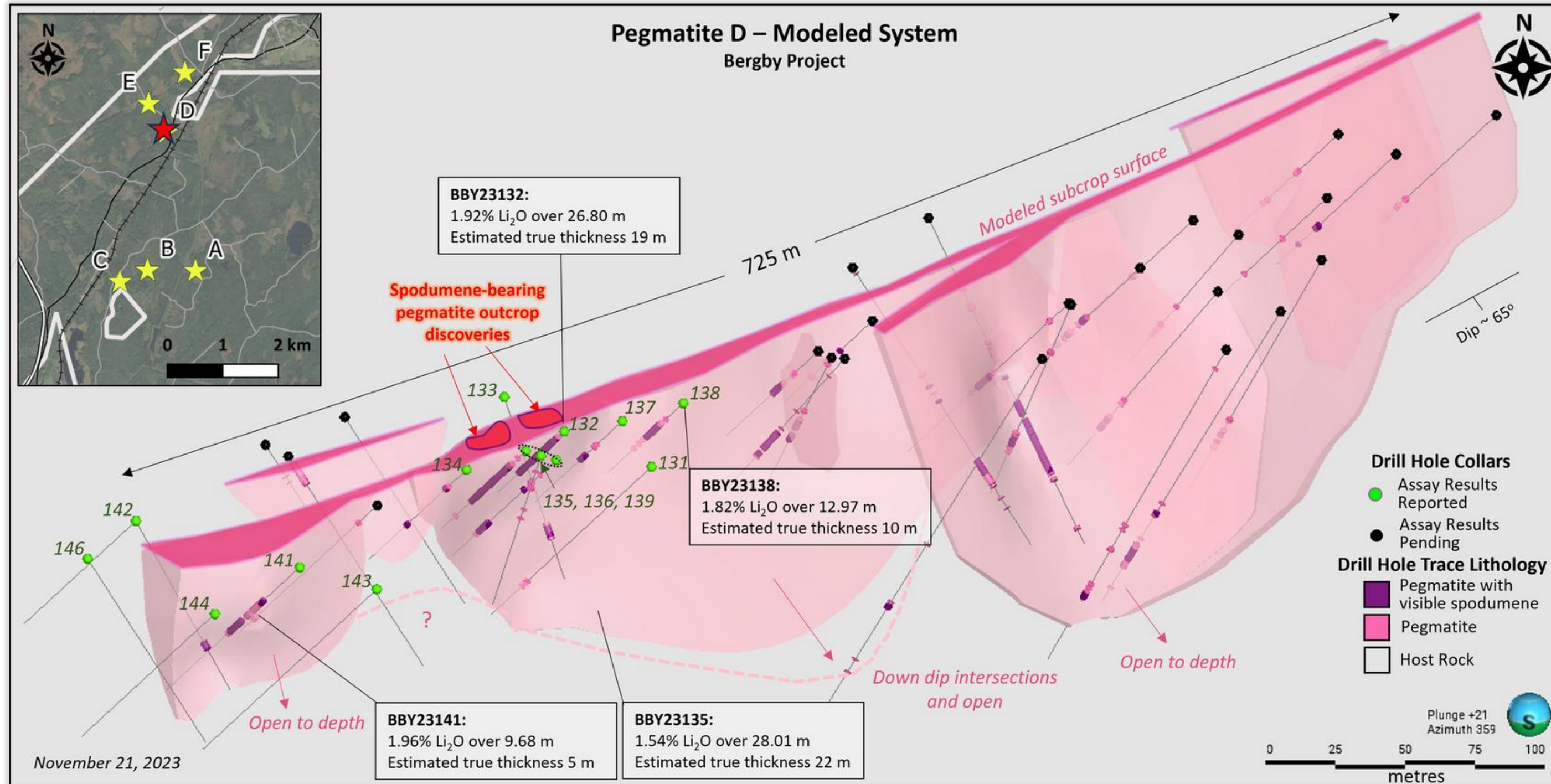
- ✓ Large land package (14,015 ha) just north of the flagship Bergby Project, in a highly prospective area
- ✓ Excellent transport infrastructure (paved roads, power, cities) and within 2 km of major deep-water port
- ✓ Pegmatite dykes have been observed and are possibly associated with the same structures as observed at Bergby
- ✓ Similar geology to Bergby area
- ✓ Expected surface sampling prospection for summer 2024

Axmarby Tenure



BERGBY PROJECT

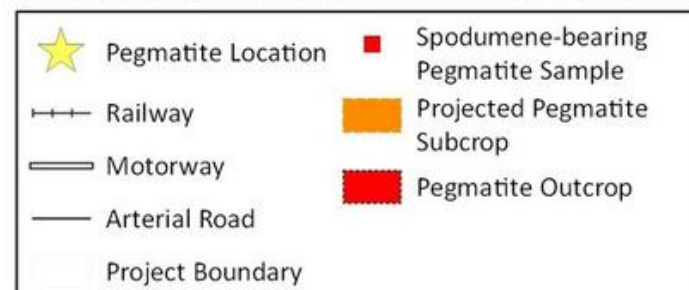
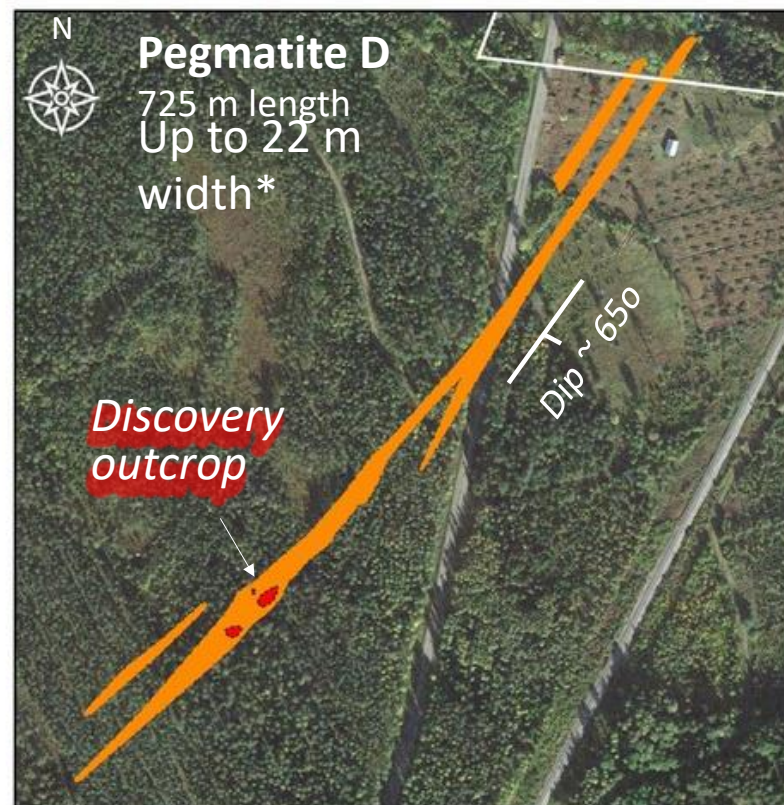
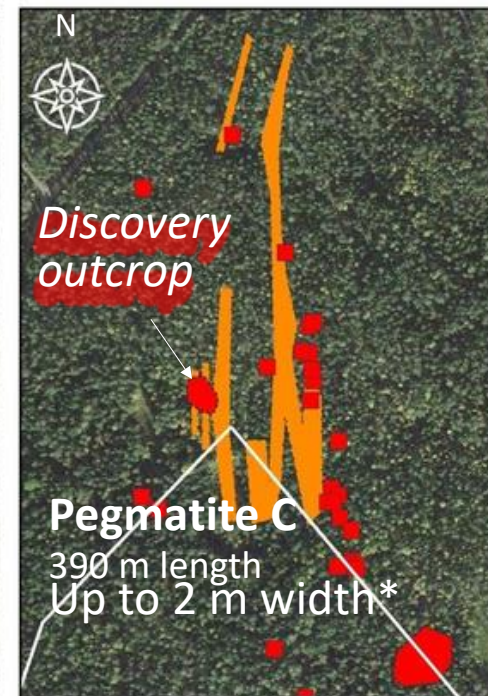
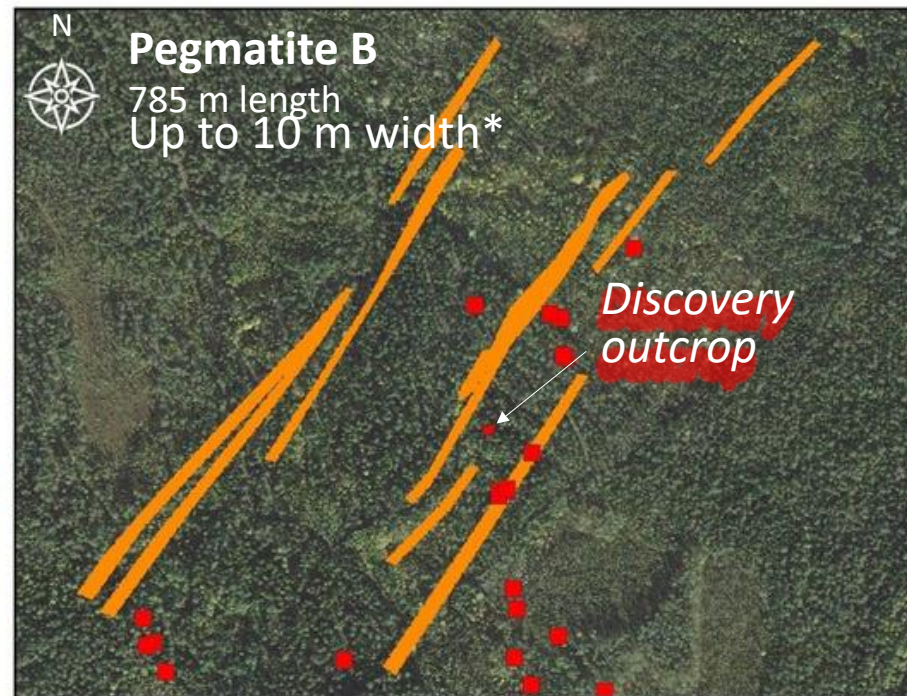
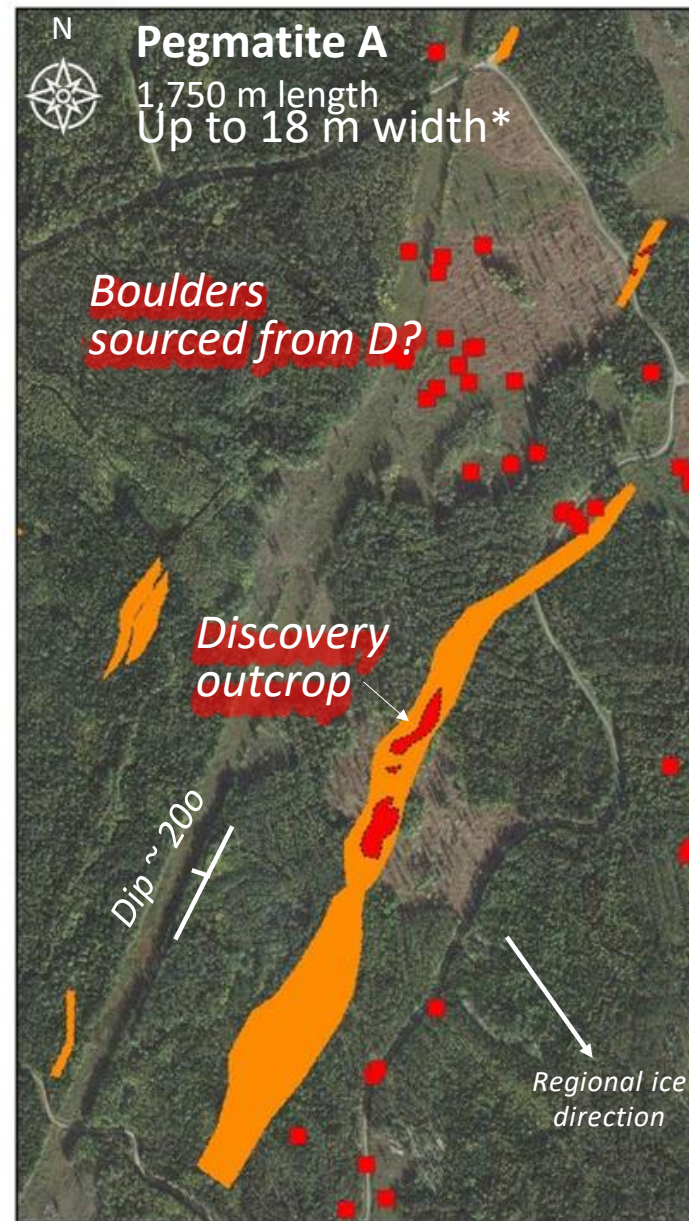
S W E D E N 



- Pegmatite D is **drilled-defined over 725 m** strike length and is open along strike to the north, and to depth below 120 m
- **Maximum true thickness 22 m** (variable along strike and to depth)
- Some areas thicken with depth – pinching and swelling 3D
- Modeling ongoing for all pegmatites at Bergby
- Continue to drill-testing new discoveries

BERGBY PROJECT

S W E D E N



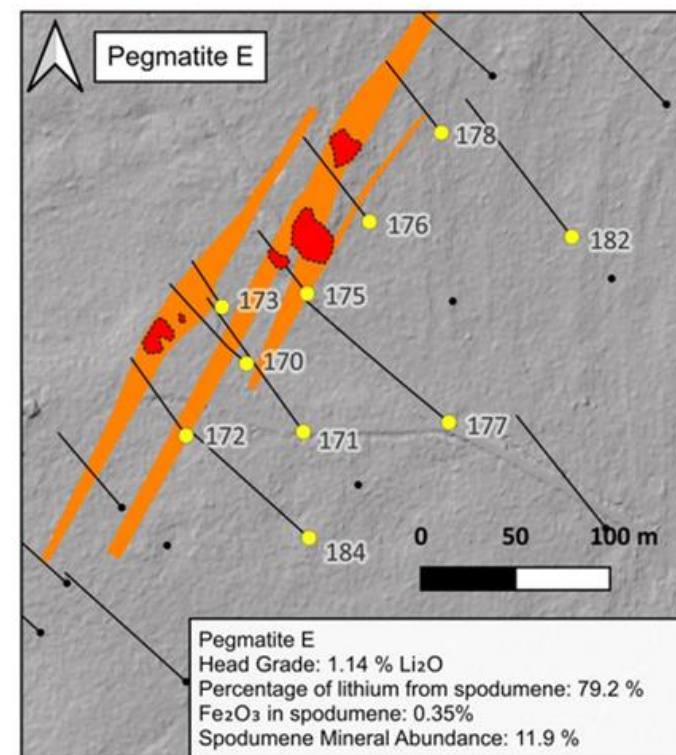
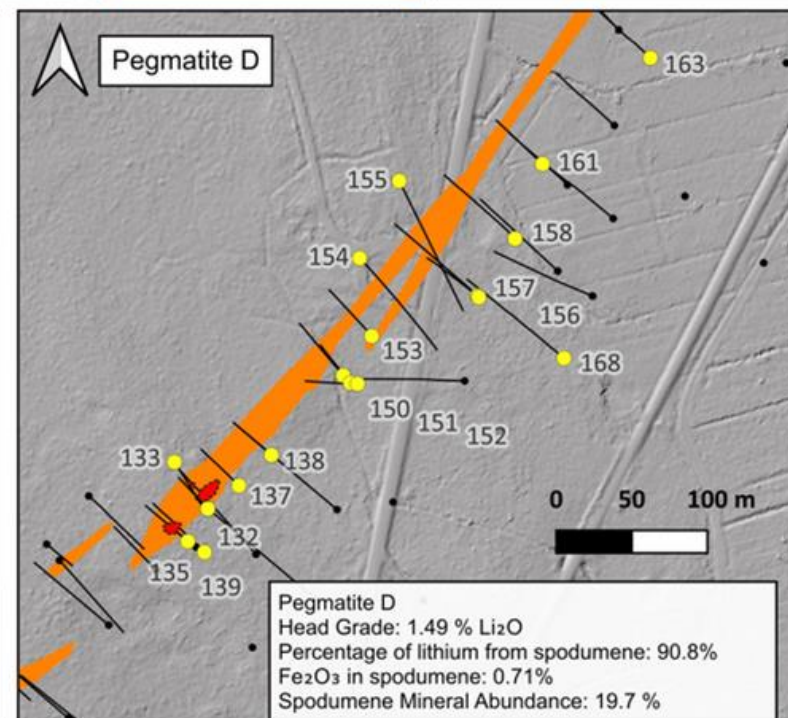
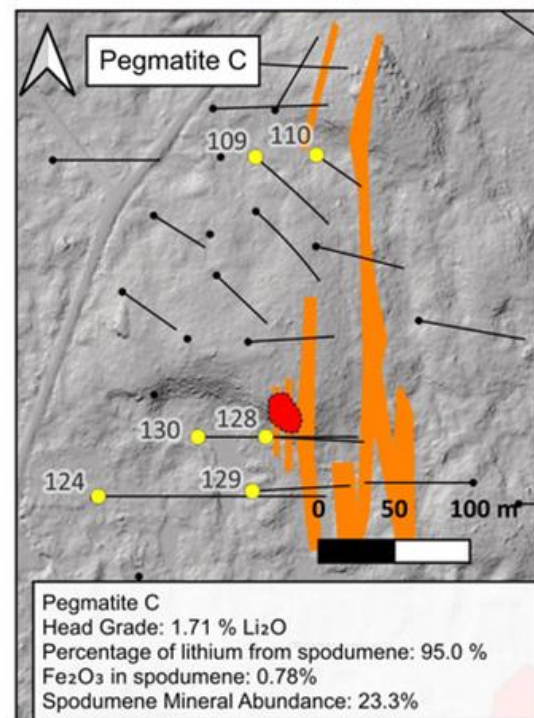
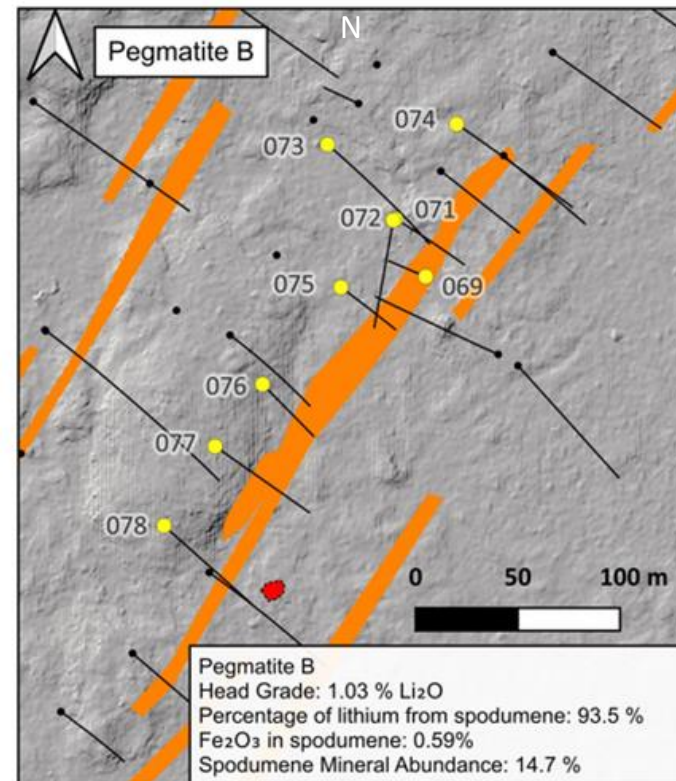
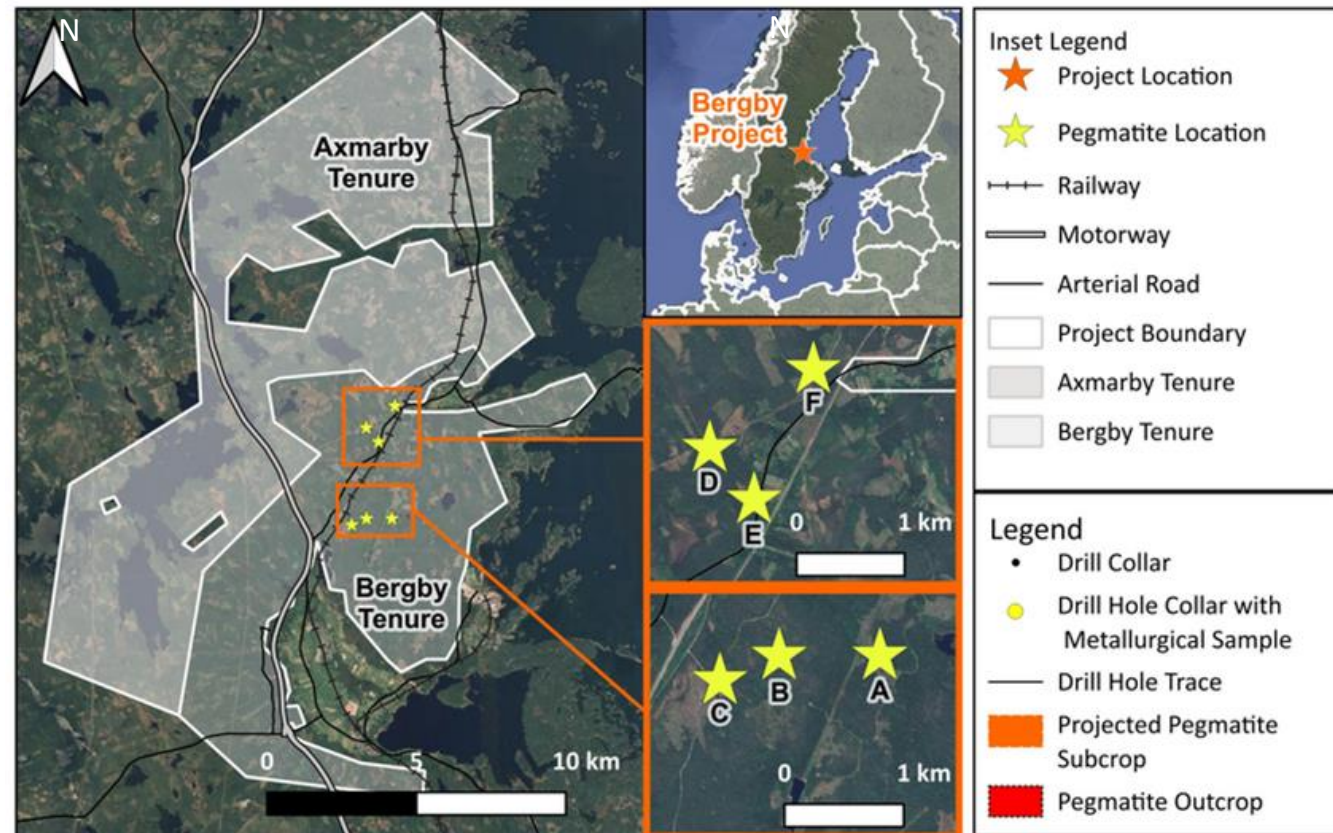
*maximum estimated true width in drilling

- Pegmatites occur in two clusters, 2 km apart
- Bodies are open along strike and to depth
- Our two largest bodies to date are Pegmatite A and D
- Pegmatite A, drill defined over 1,750 m in length and drill tested to 100 m depth
- Pegmatite D is drill defined over 725 m in length and to 120 m depth



BERGBY PROJECT

S W E D E N 



Mineralogical test work completed on samples from Pegmatite B, C, D, & E ¹

- Head grades of **1.03%, 1.72%, 1.49%** and **1.14%** Li₂O for Peg B, C, D, and E
- Mineral abundance analysis confirmed that the primary lithium mineral is spodumene, accounting for **11.9% to 23.3%** of the mineralized pegmatite mass
- Spodumene was confirmed as the primary lithium mineral, accounting for **94%, 95%, 91%, and 79%** of the lithium in Peg B, C, D, and E, respectively
- Liberated spodumene accounts for **81%** in Peg B, **78%** in Peg C, **81%** in peg D, and **41%** in Peg E
- Lithium grades of between **3.4%** and **3.1%** for recoveries of **72% to 95%**, for Peg B, C, D and E

¹ See news release dated March 13, 2025

BERGBY PROJECT

S W E D E N 

Future Work Programs

- ✓ **Exploration:**
 - At least one-third of the property remains to be explored
 - **Several unsourced spodumene-bearing boulder trains** require follow-up
 - Further prospecting, sampling and geophysical programs to refine understanding of the structural setting
- ✓ **Drilling:**
 - Infill drilling can be done to refine geologic model and target predicted high-grade zones
 - Expansion drilling at all bodies
 - Ideally drill test further new discoveries
- ✓ **Metallurgy and mineralogy:**
 - Sample Pegmatites A, B, C, D, & E for further testing and complete initial sampling on Pegmatite F



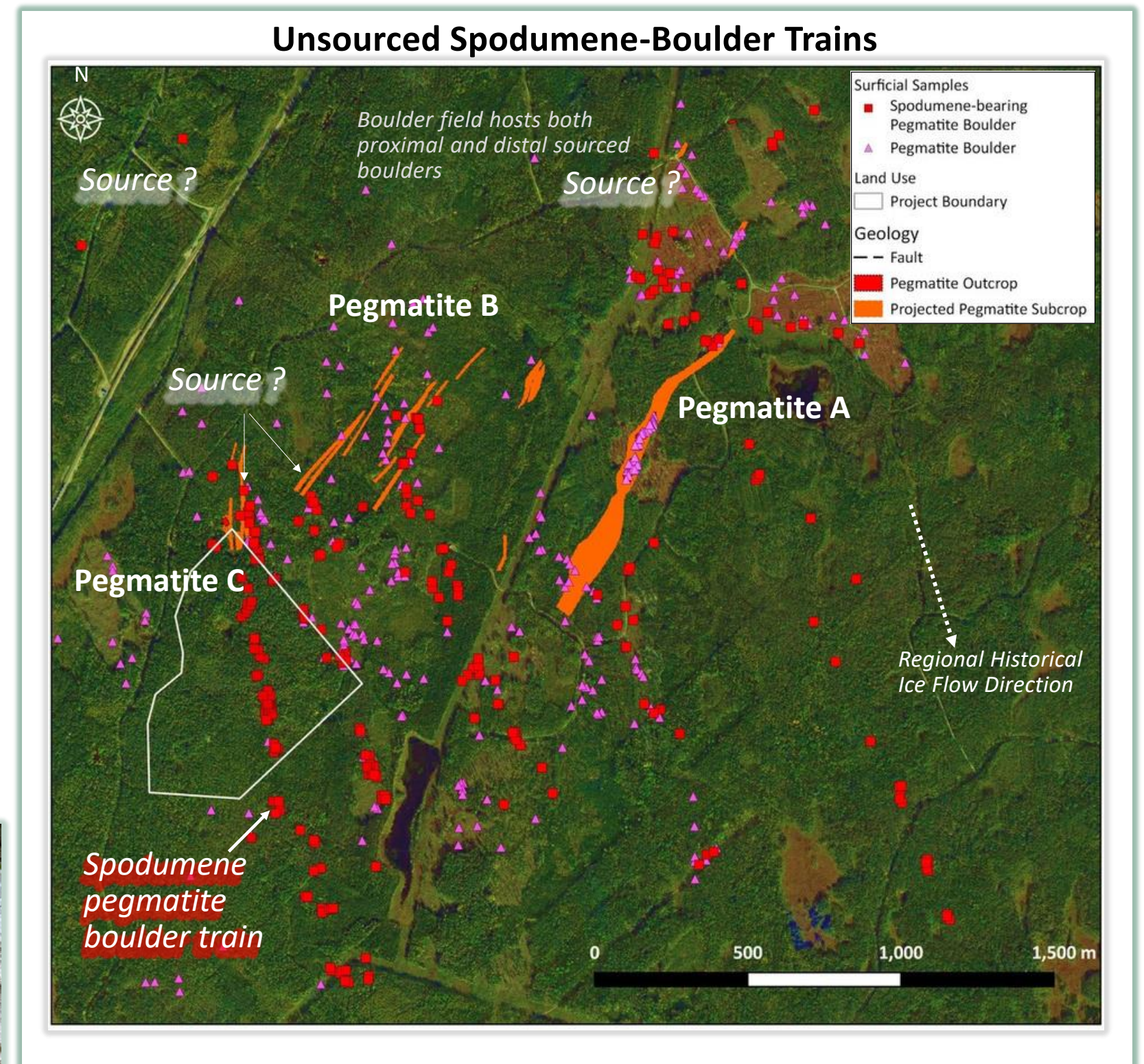
Pegmatite A North Outcrop



Pegmatite A Discovery Outcrop



Pegmatite B Boulder



KIETYÖNMÄKI PROJECT

F I N L A N D 

- ✓ **District-scale project** (900 ha) in highly-prospective terrane within mining-friendly Finland
Kietyönmäki: 900 ha - exploration license
- ✓ Lithium mineralized pegmatite discovered by the **Finnish Geological Survey** in 1985 and six drill holes were completed on the Main Dyke
- ✓ Accessible by major roads and **in close proximity to deep water ports**; 100 km from the port of Pori, Finland
- ✓ **Strategically positioned** close to critical battery markets for Lithium in Europe; 50 km from new factory in Salo, Finland
- ✓ **Drilling and detailed surface exploration** initiated to expand the Main Dyke and identify additional lithium-mineralize pegmatites



Three Key Elements:

01

NEAR INFRASTRUCTURE

Easily accessible and cost-effective exploration & drilling



02

ESTABLISHED REFINING

Project is less than 50 km from Salo battery factory



03

CRITICAL RAW MATERIALS ACT

European Council legislation to support domestic objectives



KIETYÖNMÄKI PROJECT

FINLAND 

Historical Work and Significant Results

1985 First Drill Program Completed by Geological Survey

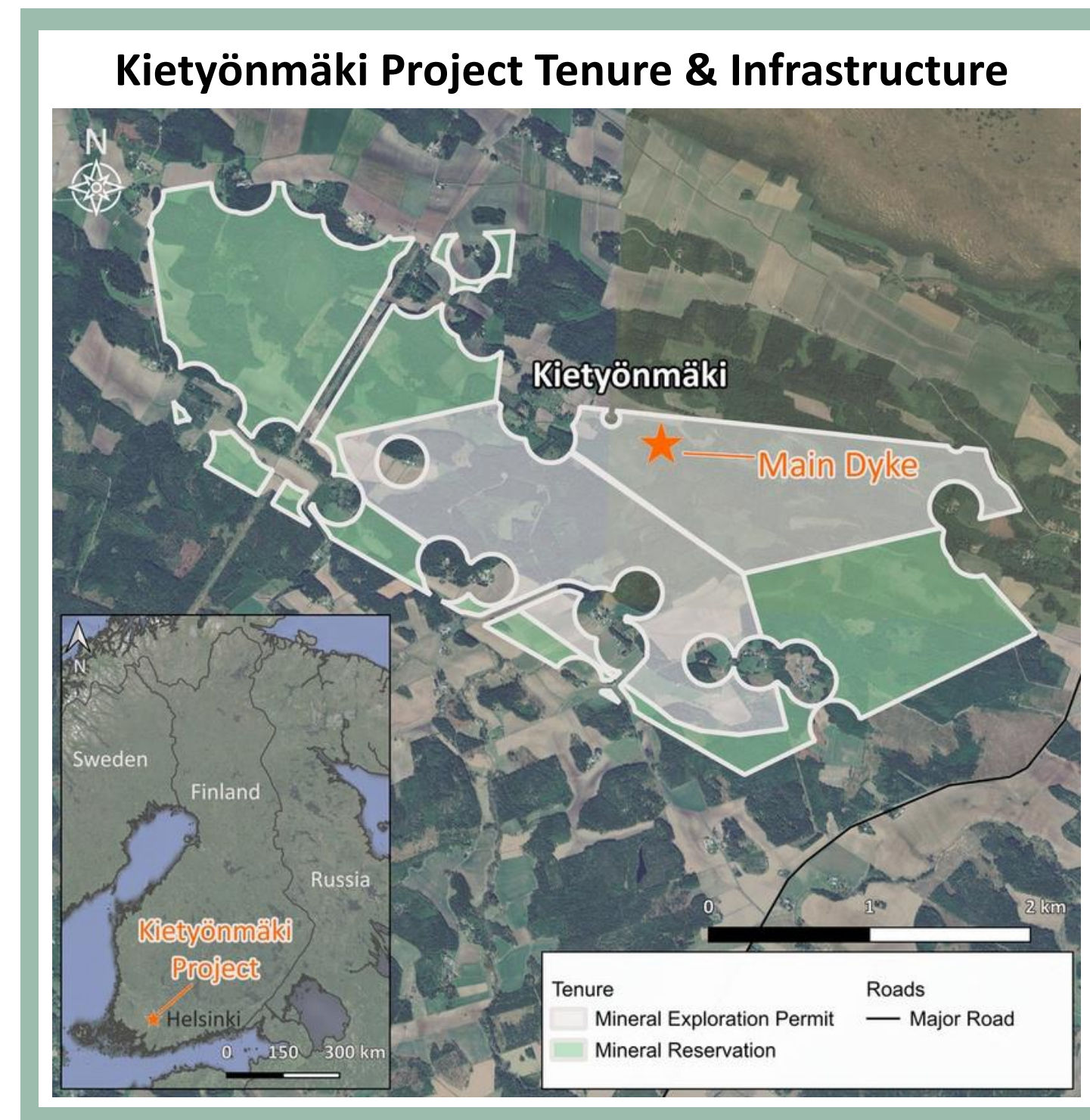
- ✓ Discovery hole in Main Dyke intersected **23 m of 1.53 % Li₂O** at surface and ended in mineralization
- ✓ Down dip follow-up hole intersected **24.5 m @ 1.3% Li₂O**. Dyke remains untested below 65 m depth. Extends at least 400 m along strike
- ✓ Completed extensive mapping, prospecting, auger and diamond drilling in the 1970's and 1980's on this project

2016 Second Drill Program – Previous Operator

- ✓ 1,172 m completed in six diamond drill holes across the Main Dyke. High grade results include **42 m @ 1.05% Li₂O** from 17.9 m depth¹
- ✓ Results suggest the body continues and thickens to the south-east.
- ✓ The initial drill results were very encouraging

2022 United Acquires the Kietyönmäki Project

- ✓ Acquires **83.6% of the Project** from a consortium. Remaining 16.4% was held by Nortec Minerals Corp.²
- ✓ Commenced surface prospecting and surface rock sampling to define further spodumene-bearing pegmatites



¹ See Avalon Minerals (ASX) news release dated September 12, 2016

² See news release dated February 14, 2022

KIETYÖNMÄKI PROJECT

FINLAND 

Current Work Program

2023 Drilling

- ✓ Drilling commenced in September 2022 on a proposed 10-hole, 1,000 m program to further delineate the Main Dyke
- ✓ The program expanded to 13 diamond drill holes and over 1,450 m, which concluded in September 2023
- ✓ 1.52% Li₂O over 25.95 m from 33.70 m depth down hole in ULDH-3; and 1.45% Li₂O over 29.50 m from 69.10 m depth down hole in ULDH-4¹
- ✓ Drilling confirmed the extend of the Main Dyke to be greater than 200 m in length and 160 m depth, remaining open along strike and at depth

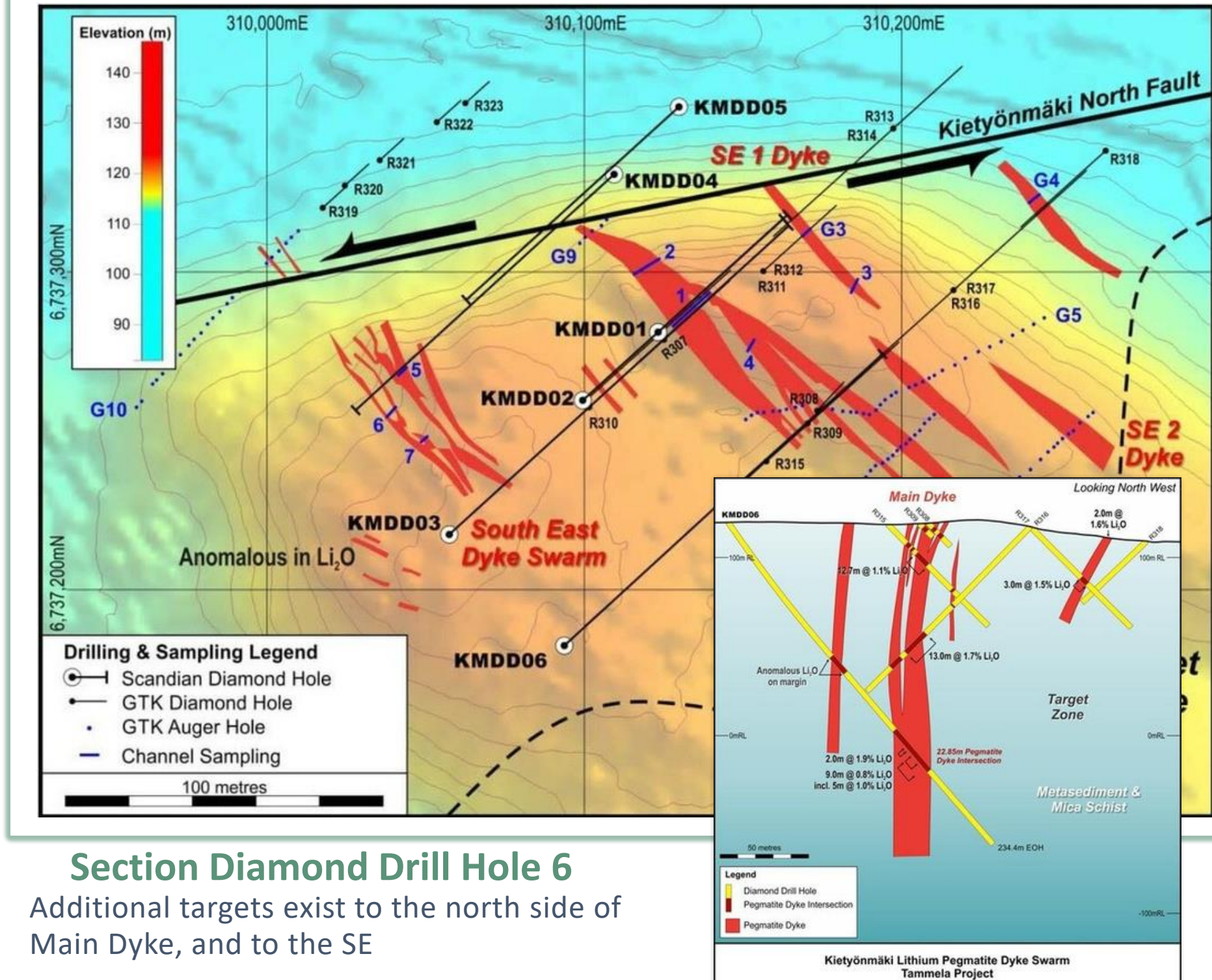
2024 Exploration & Land Package Increase

- ✓ In March 2024, acquired 100% interest in **Kietyönmäki Project** from Nortec Minerals Corp²

¹ See United News Release of October 19, 2023

² See news release dated April 9, 2024.







Kietyönmäki Project Pegmatites & Historical Drilling



PROJECT COMPARABLE

S W E D E N  & F I N L A N D 

KELIBER PROJECT

PROJECT	COUNTRY	PROJECT STAGE	Discovered by Boulders	DISTRICT SCALE
Bergby		Bergby Keliber		
Keliber				

PROJECT	TIER 1 INFRASTRUCTURE	VALUATION
Bergby	Yes: 1 Km to Port	\$5.75 M ¹
Keliber	Yes: 41 Km to Port	€550 M (100%) ² (\$798 M CAD)

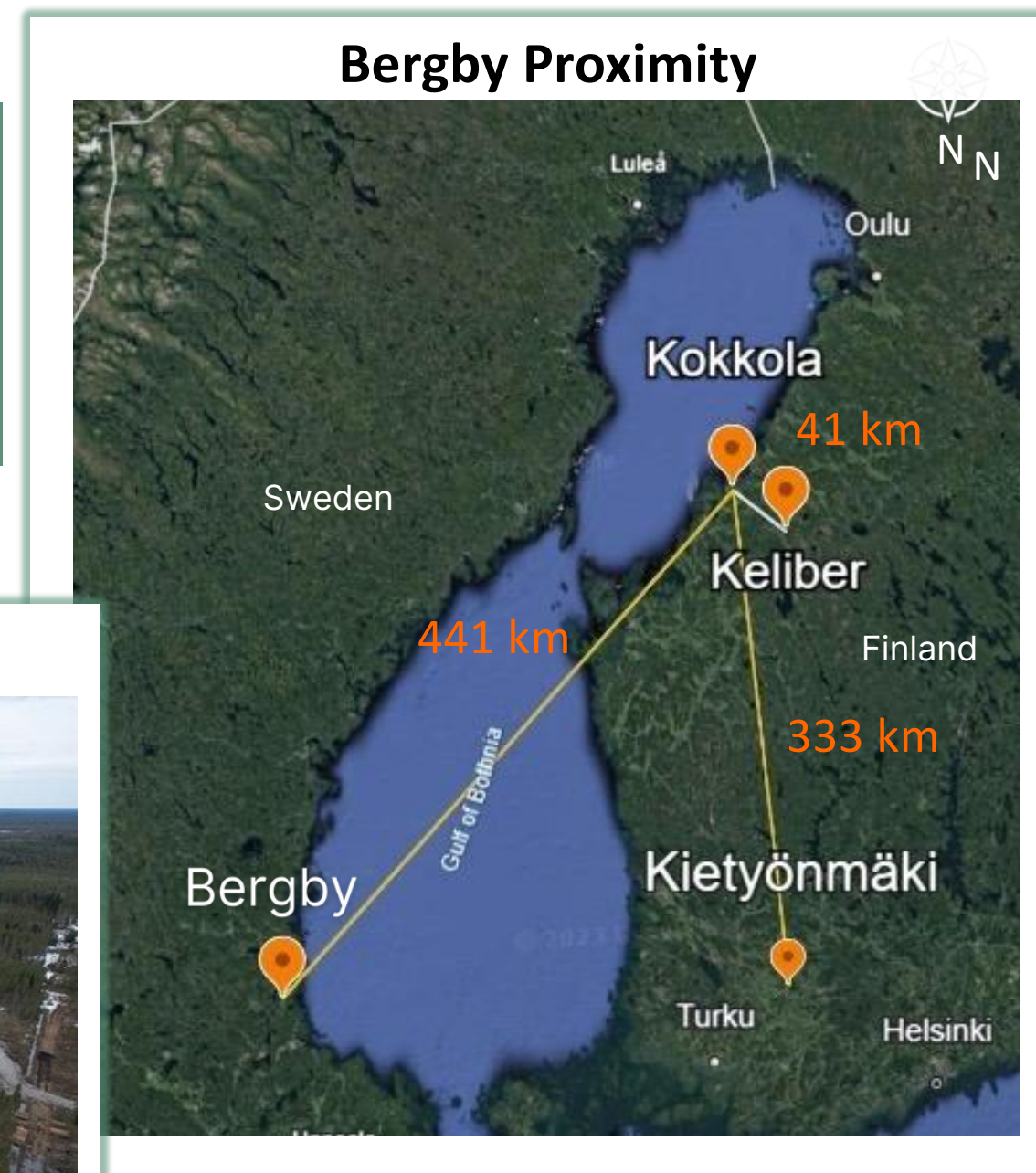
PROJECT	RESOURCES	MULTIPLE PEGMATITES
Bergby	Discovery Stage	Yes: 5 (potentially more)
Keliber	11.3 mt at 1.25% Li ₂ O M&I ³	Yes: 5

¹ United's Enterprise value at market close April 24, 2025

² See Sibanye Stillwater news release dated October 3, 2022

³ See Sibanye Stillwater Mineral Resources and Mineral Reserves

Report 2023, for the year ended 31 December 2023, p.98



STRONG FUNDAMENTALS

- ✓ **Premier global portfolio** of hard rock lithium projects
- ✓ Strong management team with **proven track record** in the lithium space
- ✓ Substantial Nordic presence with projects in **mining-friendly** Sweden and Finland to support the EU's goal of becoming the **first carbon-neutral continent**
- ✓ USA projects located in **historic lithium-bearing pegmatite mining districts** Colorado, South Dakota and Wyoming
- ✓ **Extensive plans** for exploration and project advancement

A photograph of a geological hammer and a rock specimen in a field. The hammer has a wooden handle and a metal head. The rock is light-colored and has a rough, crystalline texture. The background consists of green grass and some small plants. The word "APPENDIX" is overlaid in white, bold, sans-serif font in the center of the image.

APPENDIX

KEY LITHIUM INDUSTRY DEVELOPMENTS

April 2021

Galaxy Resources and Orocobre announce a US\$3.1B merger

September 2021

Sibanye-Stillwater purchases half of Ioneer's Rhyolite Ridge project for US\$490M

December 2021

Rio Tinto purchases Rincon Lithium project in Argentina for US\$825M from Rincon Mining

May 2022

Lithium Chile receives US\$34M investment from Chengxin Lithium Group

October 2022

Sibanye Stillwater increases its stake in Finnish battery metal company Keliber to 80% - Total investment now ~US\$484M

May 2023

Two global lithium companies Allkem and Livent announce US\$10.6B merger

Gangfeng Lithium acquires Bacanora Lithium for US\$310.5M

August 2021

Millennial Lithium acquired by Lithium Americas for US\$491M

November 2021

Zijin Mining Group acquires Neo Lithium for US\$6.50/share

January 2022

Lithea Inc – Assets in Salta Province offered US\$962M from Gangfeng Lithium

August 2022

Arena Minerals acquired for US\$227M by Lithium Americas

December 2022

Hancock Prospecting / Mrs. Gina Rinehart increased holdings in Liontown Resources and Azure Minerals, blocking take over events

October 2023

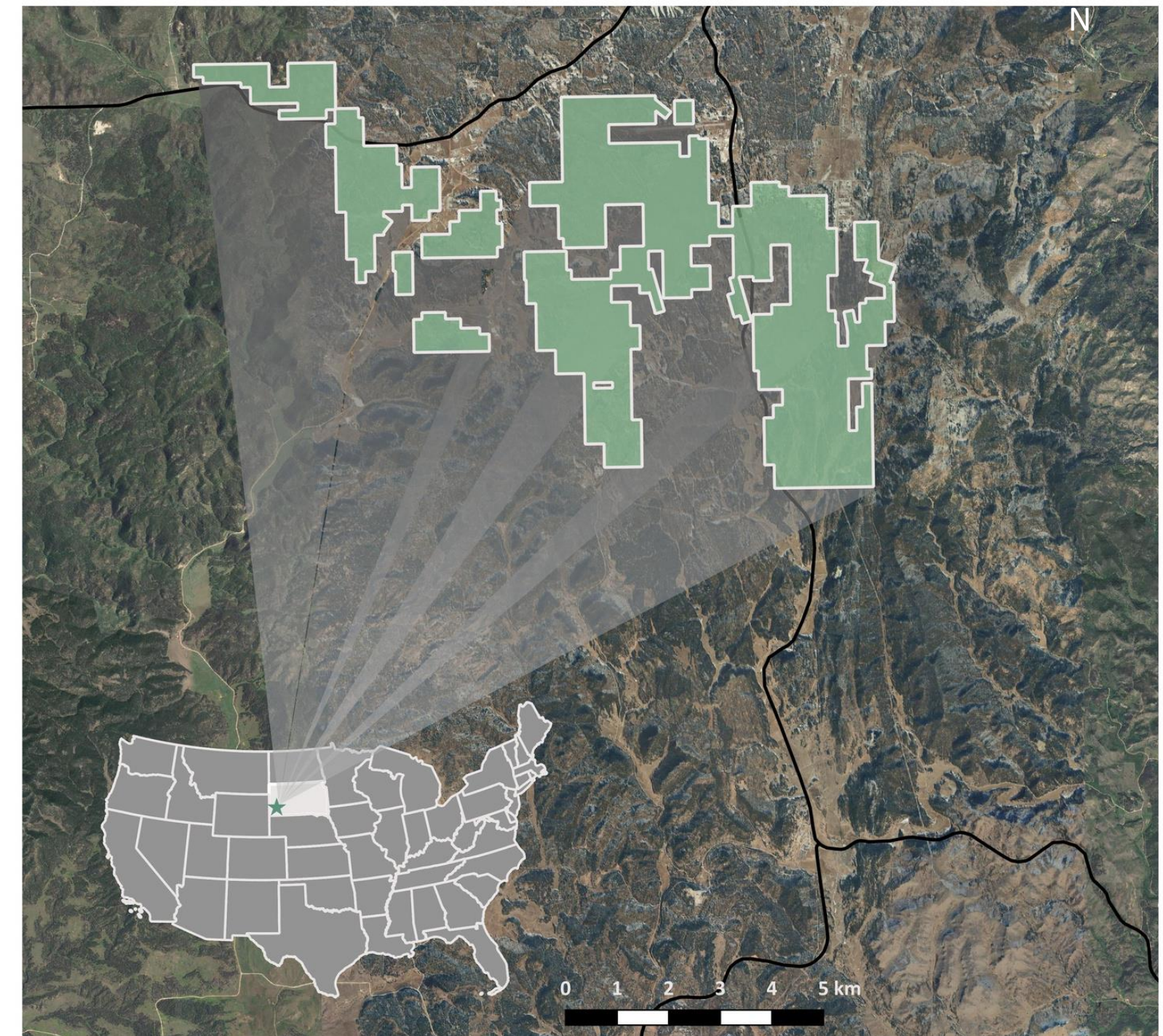


LIBERTY PROJECT

S O U T H D A K O T A , U S A 

- ✓ Located within a **historically significant hard-rock lithium mining district** producing US\$66M in pegmatite minerals between 1844 & 1958¹
- ✓ **Large project area** (3,282 ha) that hosts numerous pegmatite bodies, including past lithium-beryllium producers
- ✓ **Located near major infrastructure** such as interstate highways, an airport and the city of Custer
- ✓ **A first-mover in staking in this very prospective and active exploration region** with many companies now exploring for lithium in the area
- ✓ Since staking the project in 2022, United has completed extensive surface outcrop and soil sampling to **identify drill targets**²
- ✓ **Inflation Reduction Act** supports domestic mining of lithium in the USA

Liberty Project Location and Tenure



¹ Page et al., 1953. Value converted to 2023 USD dollars. ² See news release dated August 29, 2023.

LIBERTY PROJECT

S O U T H D A K O T A , U S A



Work to Date and Future Plans

2022 Staking and Initial Exploration

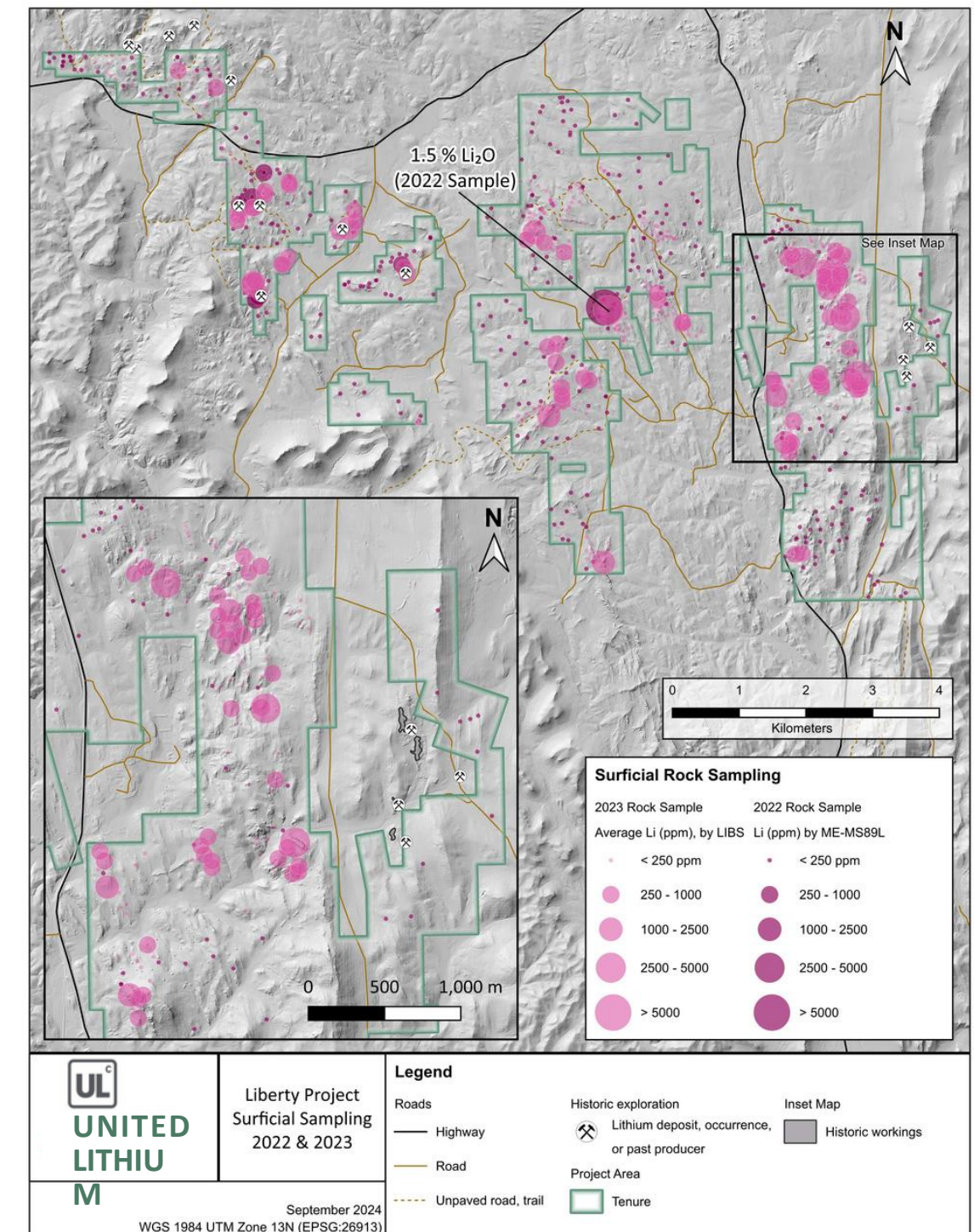
- ✓ Staked more than 6,000 ha of highly-prospective land recognized for its historical mining of Lithium-Cesium-Tantalum (LCT) pegmatites¹
- ✓ Completed early reconnaissance prospecting, surface bedrock sampling (472 samples) with rock chip sampling of exposed pegmatite yielding **1.51% Li₂O** (assayed)²

2023 Current Work and Future Plans

- ✓ Surface bedrock sampling, soil sampling, mapping and prospecting completed over the entire 6,000 ha property²
- ✓ At least **seven target areas** identified from surface work warrant follow up and several exposed pegmatite bodies mapped²
- ✓ Advancing towards obtaining drill permits in 2024



Liberty Project surface sampling results



¹ See news release dated August 29, 2023.

² See news release dated May 3, 2022.



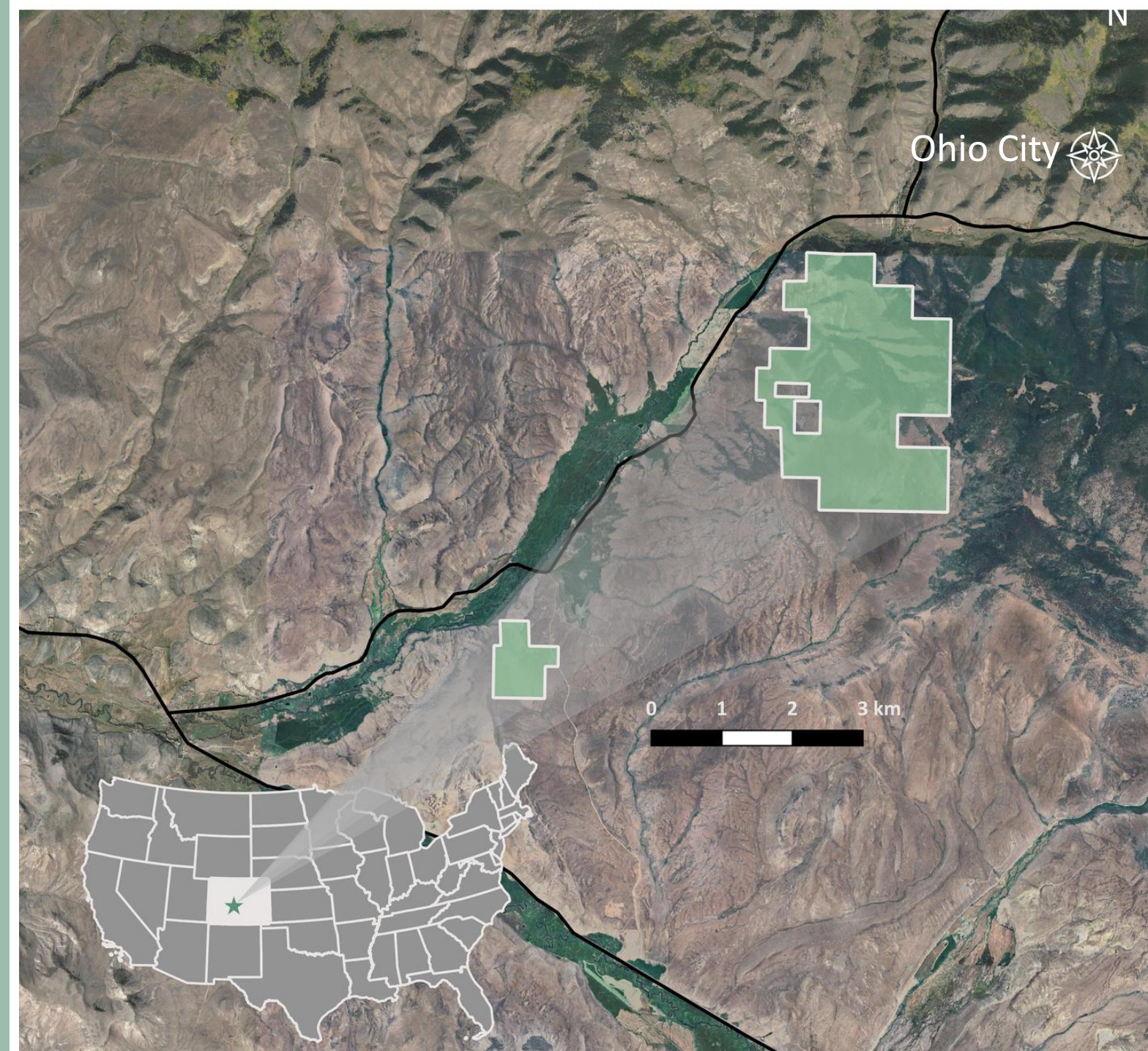
PATRIOT PROJECT

C O L O R A D O , U S A



- ✓ **Large land package** (780 ha) staked by United in 2022 in Gunnison County
- ✓ **Well-positioned** - infrastructure near Ohio City with access via interstate highway. Nearby airport and services
- ✓ **Numerous pegmatite bodies** - several of which were historically mined for lithium, beryllium and tantalum
- ✓ **Lithium bearing minerals** - spodumene and lepidolite have been identified in these bodies on the project
- ✓ **Highly prospective region** – underexplored, without access to modern tools and methods
- ✓ **Sampling program complete** – 15 lithium-bearing pegmatite occurrences identified, including nine new discoveries with high-grade assay results

Patriot Project Location and Tenure



PATRIOT PROJECT

C O L O R A D O , U S A



Work to Date and Future Plans

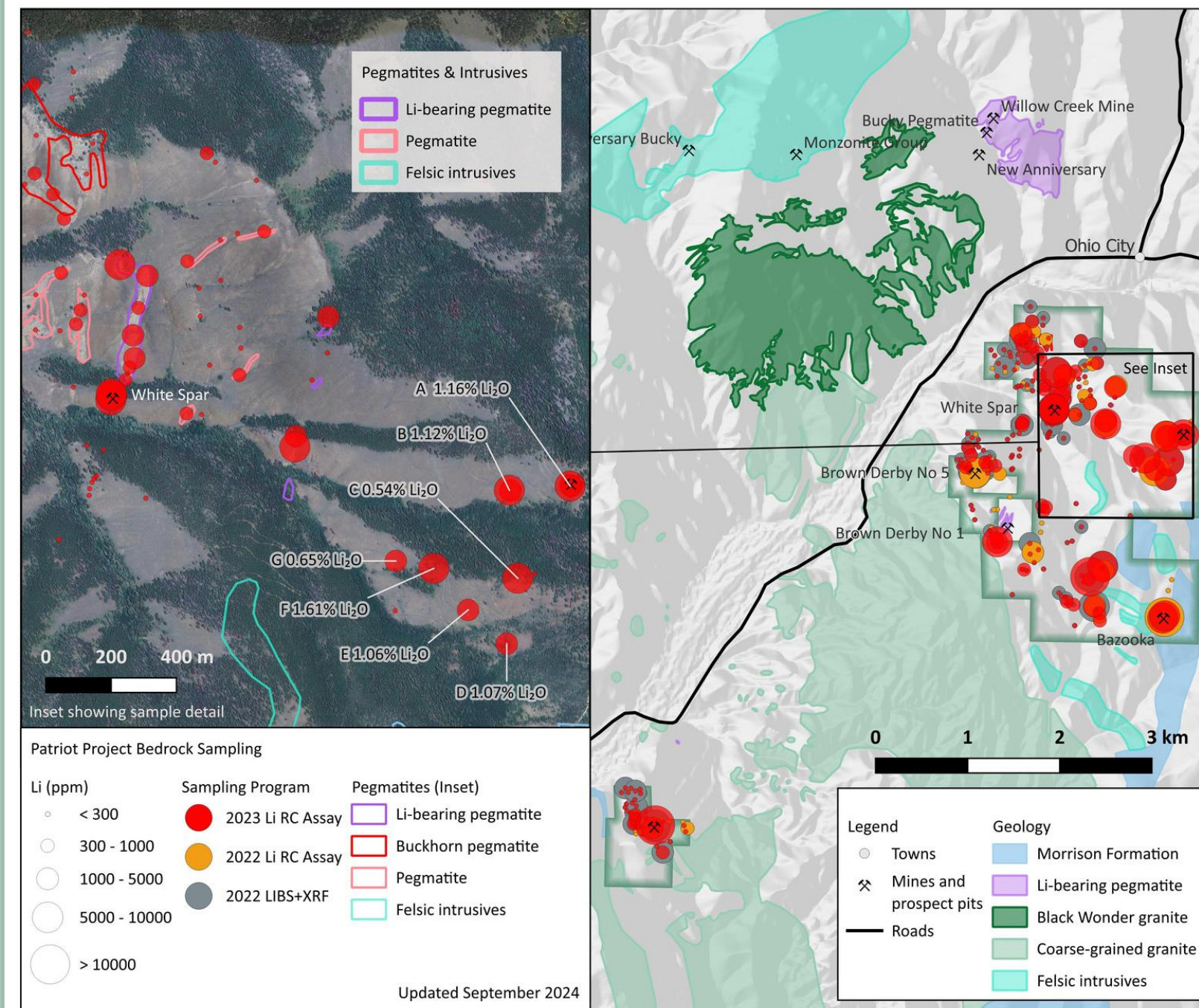
2023

Staking and Initial Exploration

- ✓ Staked more than 2,041 ha of highly-prospective land recognized for its more than 1,800 occurrences of pegmatite¹
- ✓ Many pegmatite bodies are known to contain lepidolite, cleavelandite and spodumene, including some on the property according to work by the USGS²
- ✓ Surface bedrock sampling program completed in Sept 2023 featuring 9 new pegmatite discoveries, with high-grade results of up to 3.97% Li₂O
- ✓ The project encompasses a good portion of the Quartz Creek pegmatite filed with a known source pluton
- ✓ Advancing towards obtaining drill permits in 2024



Patriot Project Surface Outcrop Sampling Results



¹ Staatz and Trites, USGS, See news release dated May 2, 2022. ² See news release dated May 2, 2022.





THANK YOU

UNITED LITHIUM CORPORATION

Contact Us

Suite 710, 1030 West Georgia Street Vancouver, BC

V6E 2Y3 Canada

Email: ir@unitedlithium.com

Phone: 604-428-6128

CSE: ULTH | OTCQX: ULTHF | FWB: OUL